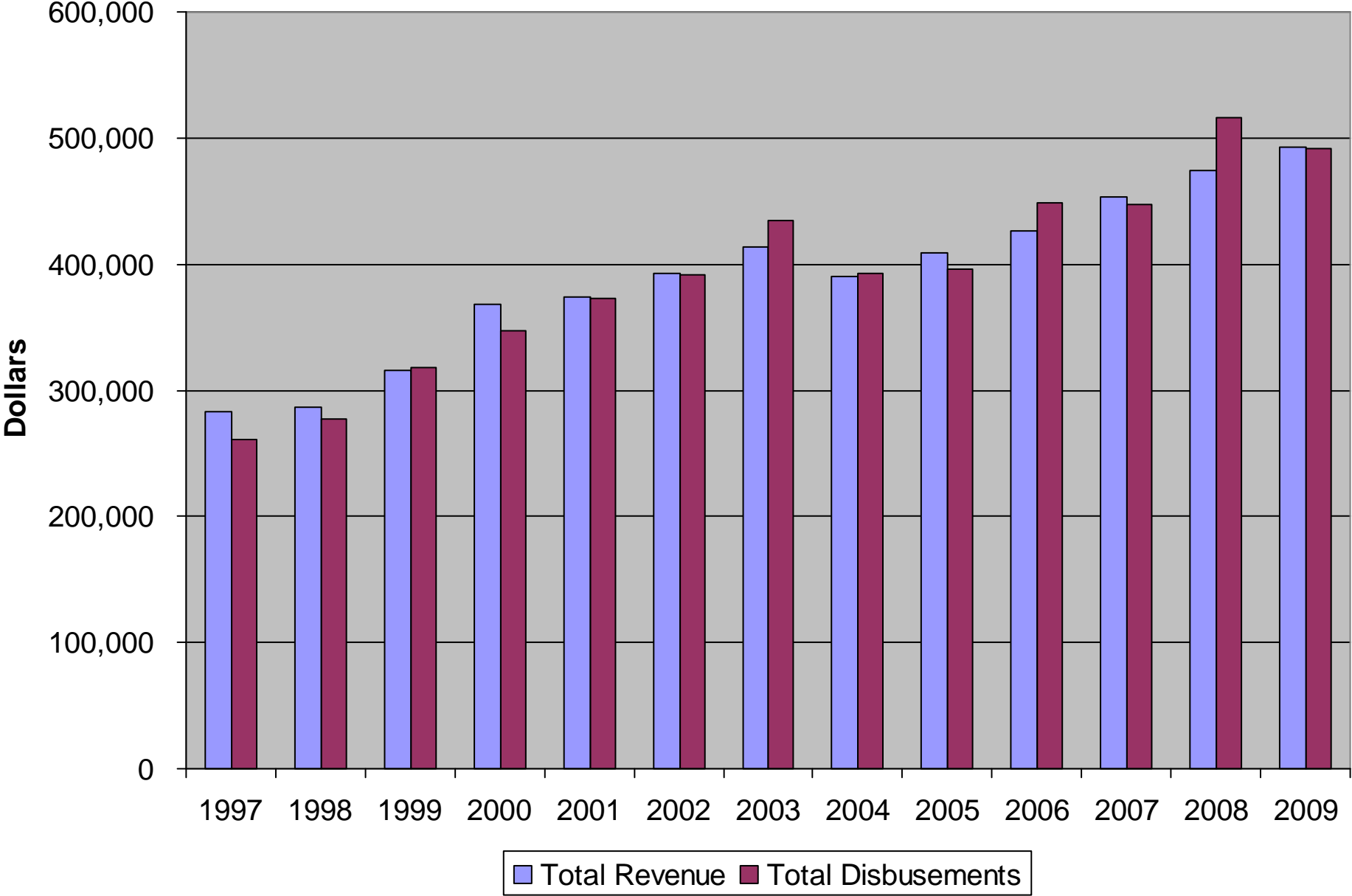


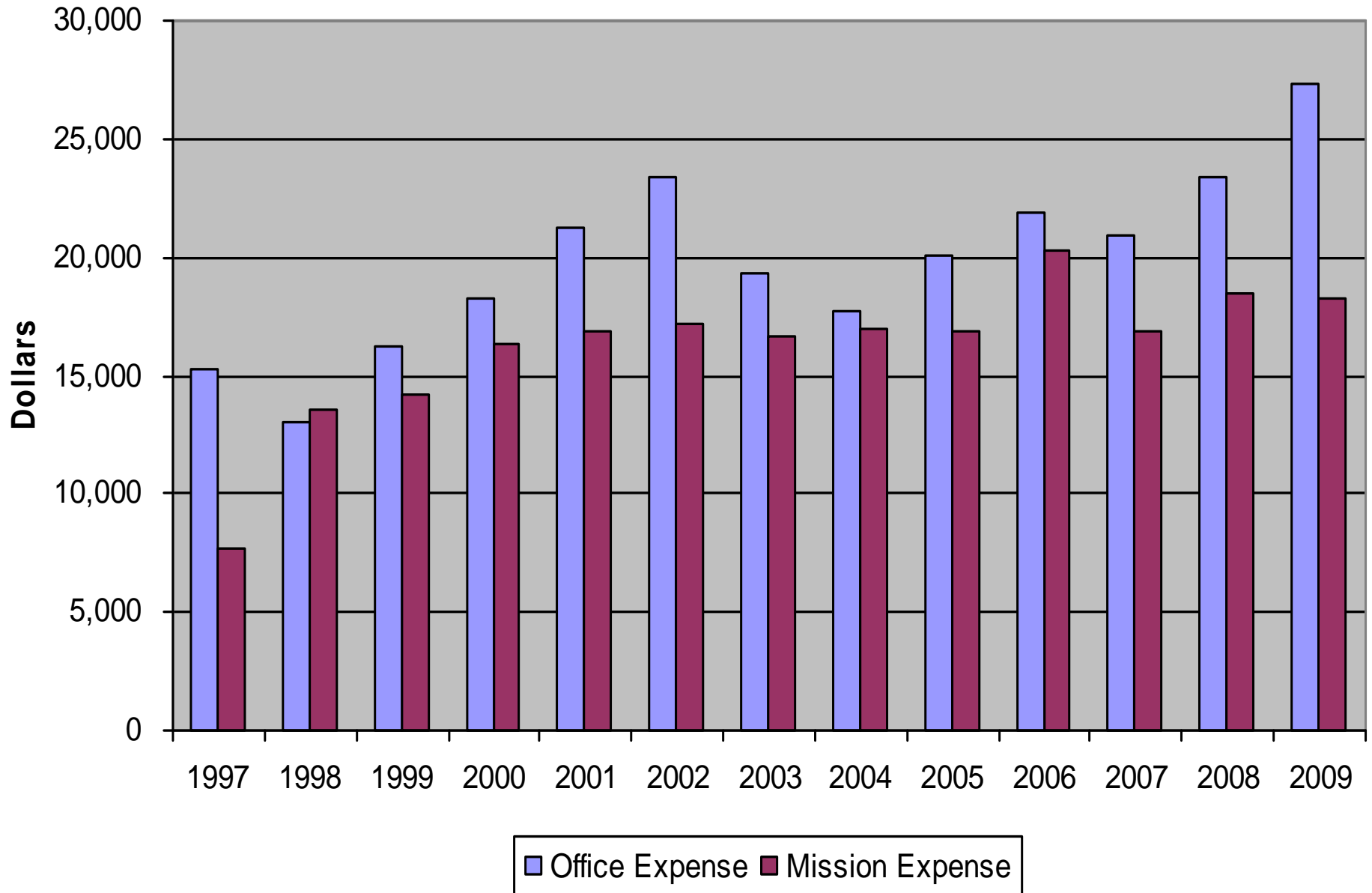
# Financial Analysis: 1997 to 2009

St. Andrew's Episcopal Church,  
Bryan, Texas

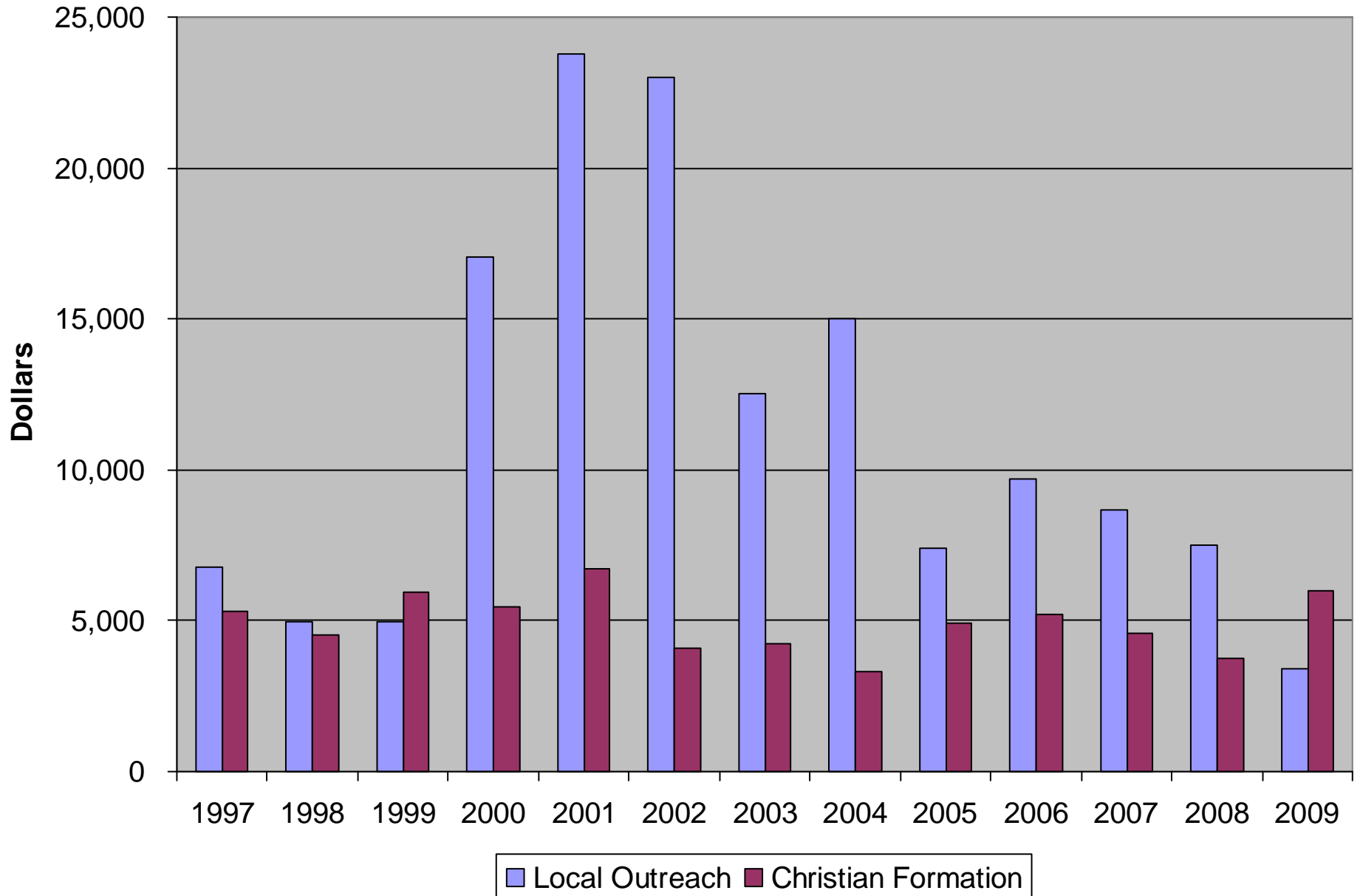
# Total Revenue and Total Disbursements, 1997 to 2009



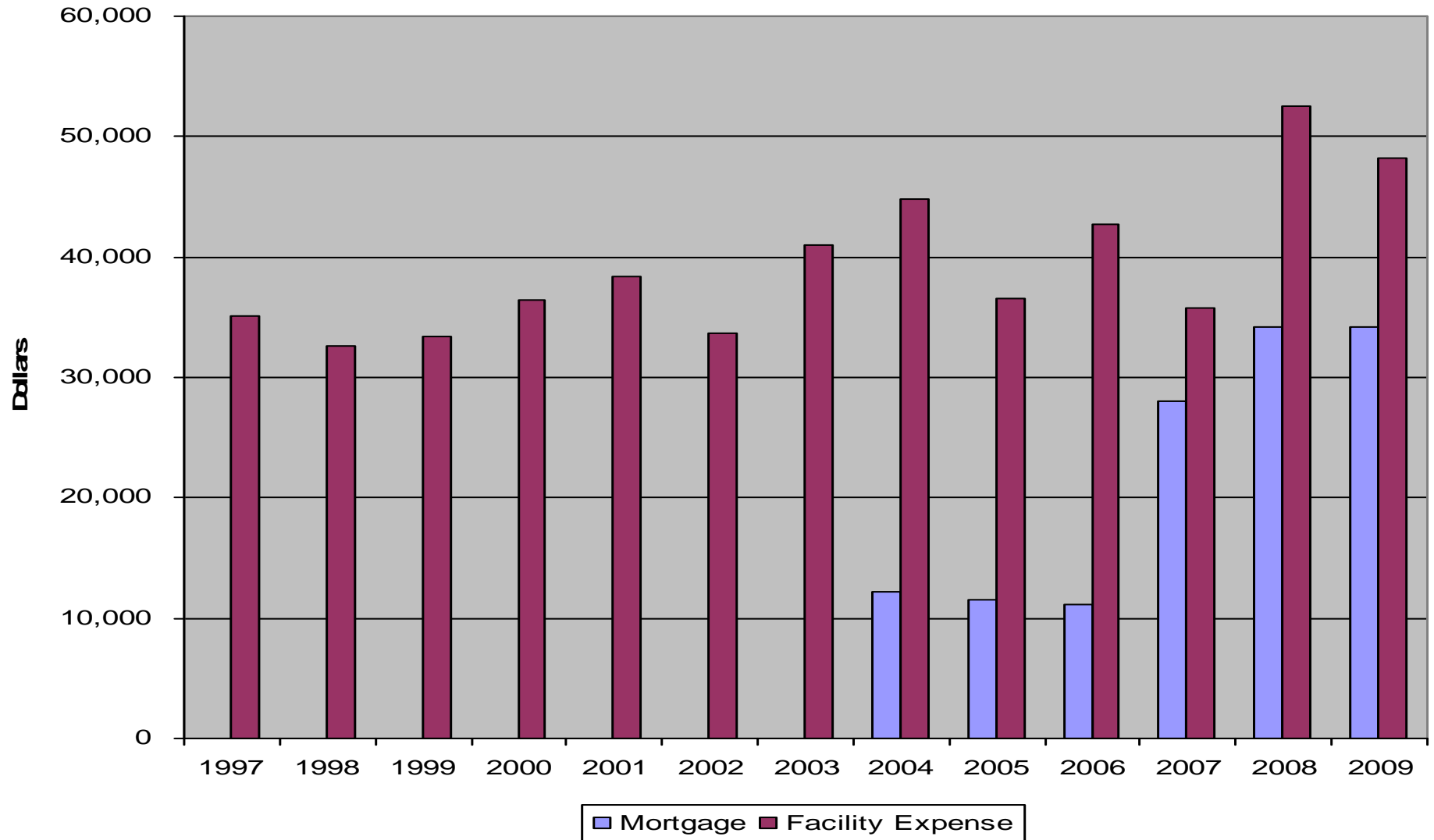
## Office Expense and Mission Expense, 1997 to 2009



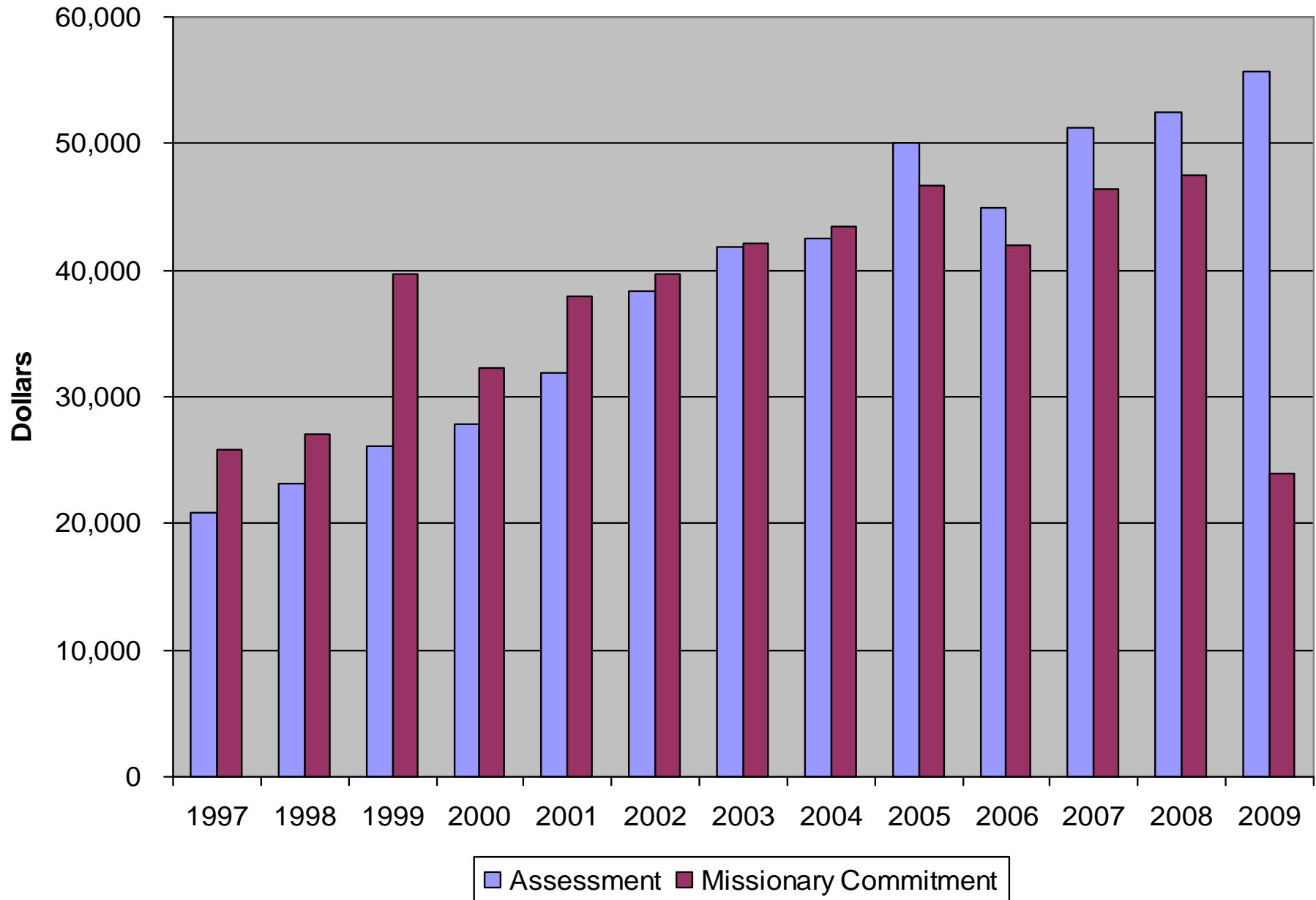
## Local Outreach and Christian Formation, 1997 to 2009



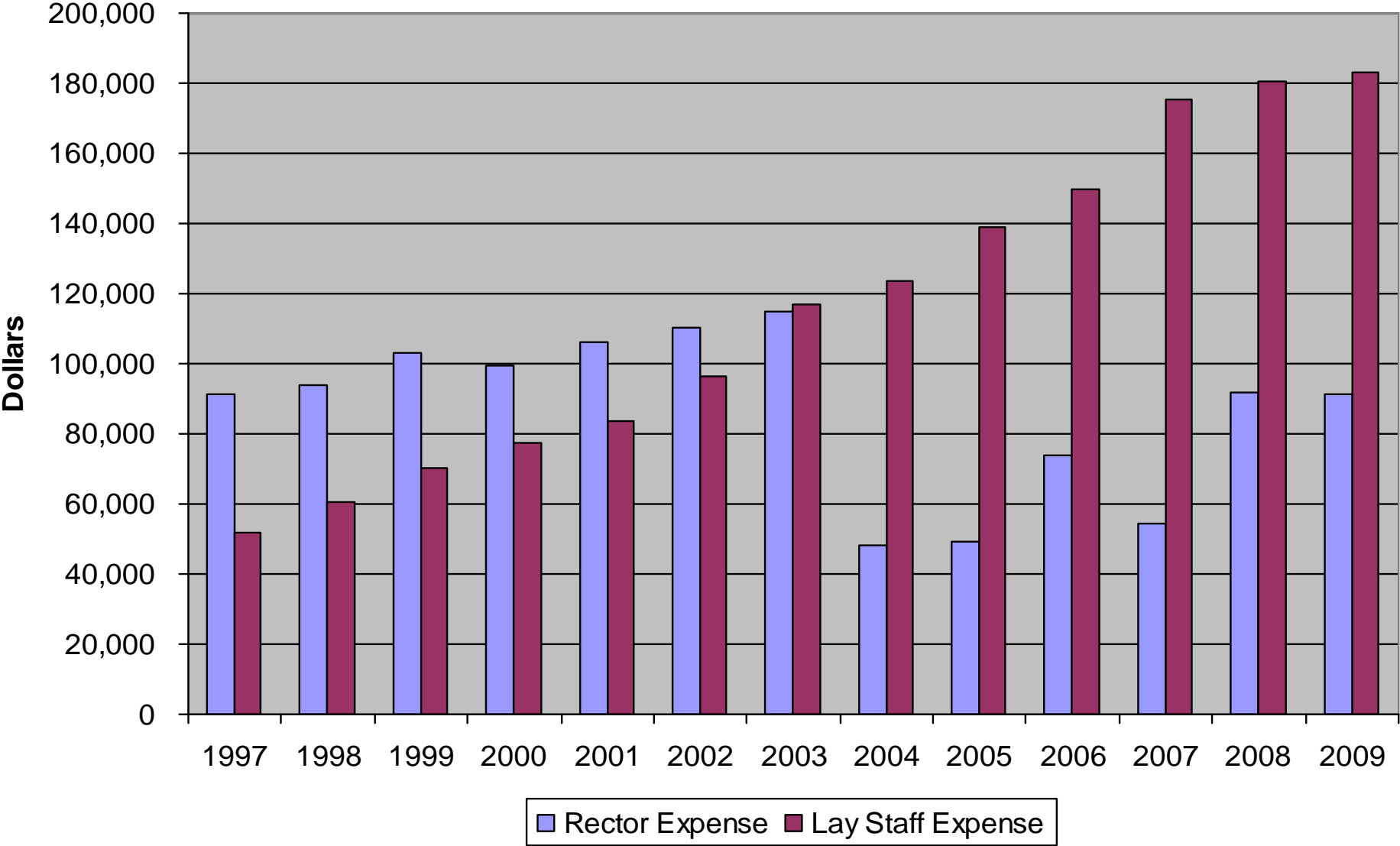
### Mortgage and Facility Expense, 1997 to 2009



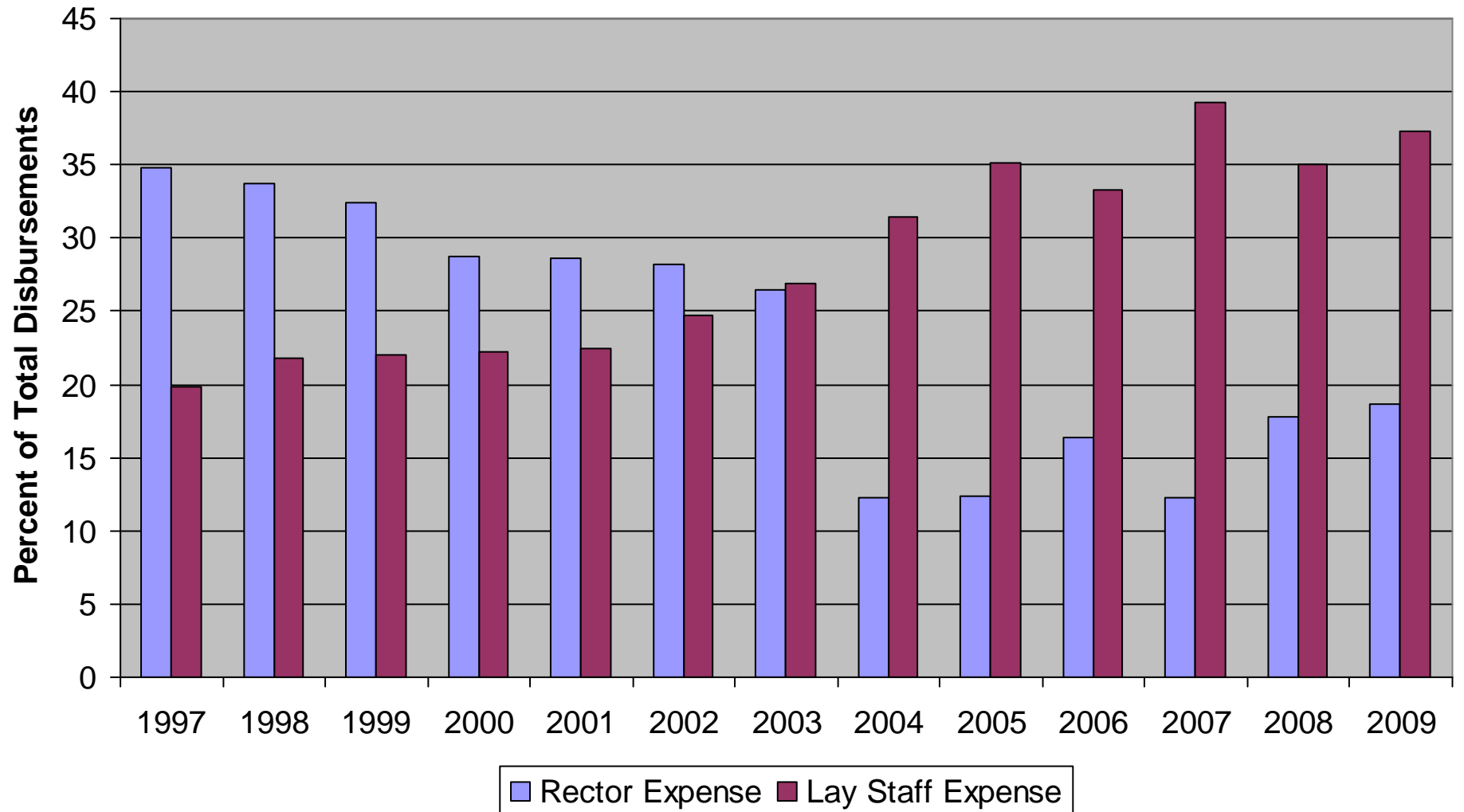
## Assessment and Missionary Commitment, 1997 to 2009



# Rector Expense and Lay Staff Expense, 1997 to 2009



## Rector Expense and Lay Staff Expense as a Percent of Total Disbursements, 1997 to 2009



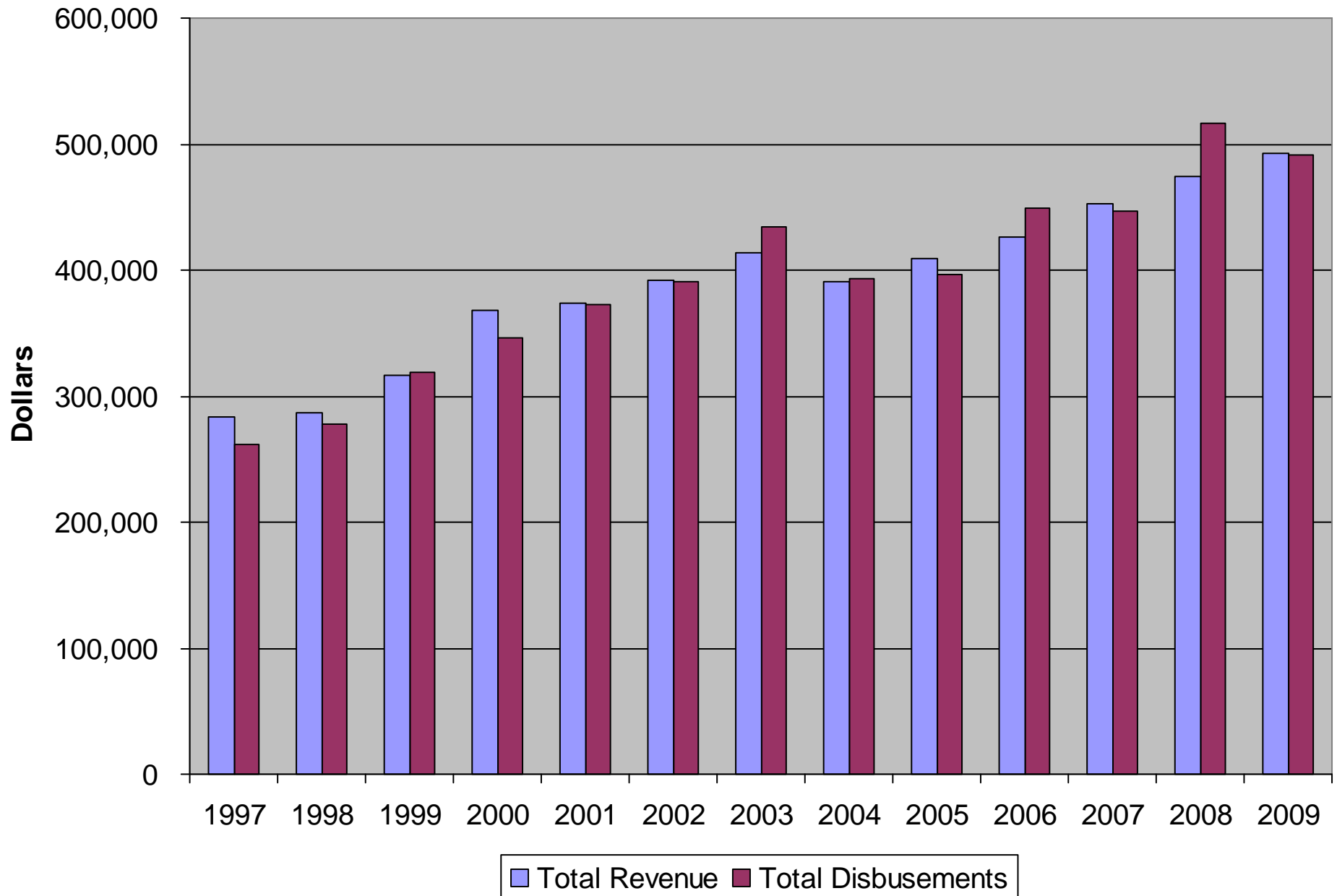
## Lay Staff Expenses, 1997 to 2001

<b>Year</b>	<b>1997</b>	<b>1998</b>	<b>1999</b>	<b>2000</b>	<b>2001</b>
Parish Secretary Salary	16,111	17,405	21,379	22,417	24,720
Pension Premium	1,543	1,454	1,069	1,771	2,072
Health Insurance	2,488	2,480	2,964	3,200	3,578
Communication Director	0	0	0	0	0
Office Assistance	2,153	2,216	2,321	5,017	5,730
Parish Bookkeeper	7,621	8,543	9,929	10,700	11,928
Director of Music	12,532	13,172	13,468	14,519	15,229
Director of Christian Education	2,722	2,939	3,086	3,404	3,780
Assistant Director of Christian Ed	0	0	0	0	0
Youth Program Director	0	5,108	7,108	7,560	8,035
Sexton	0	0	0	0	0

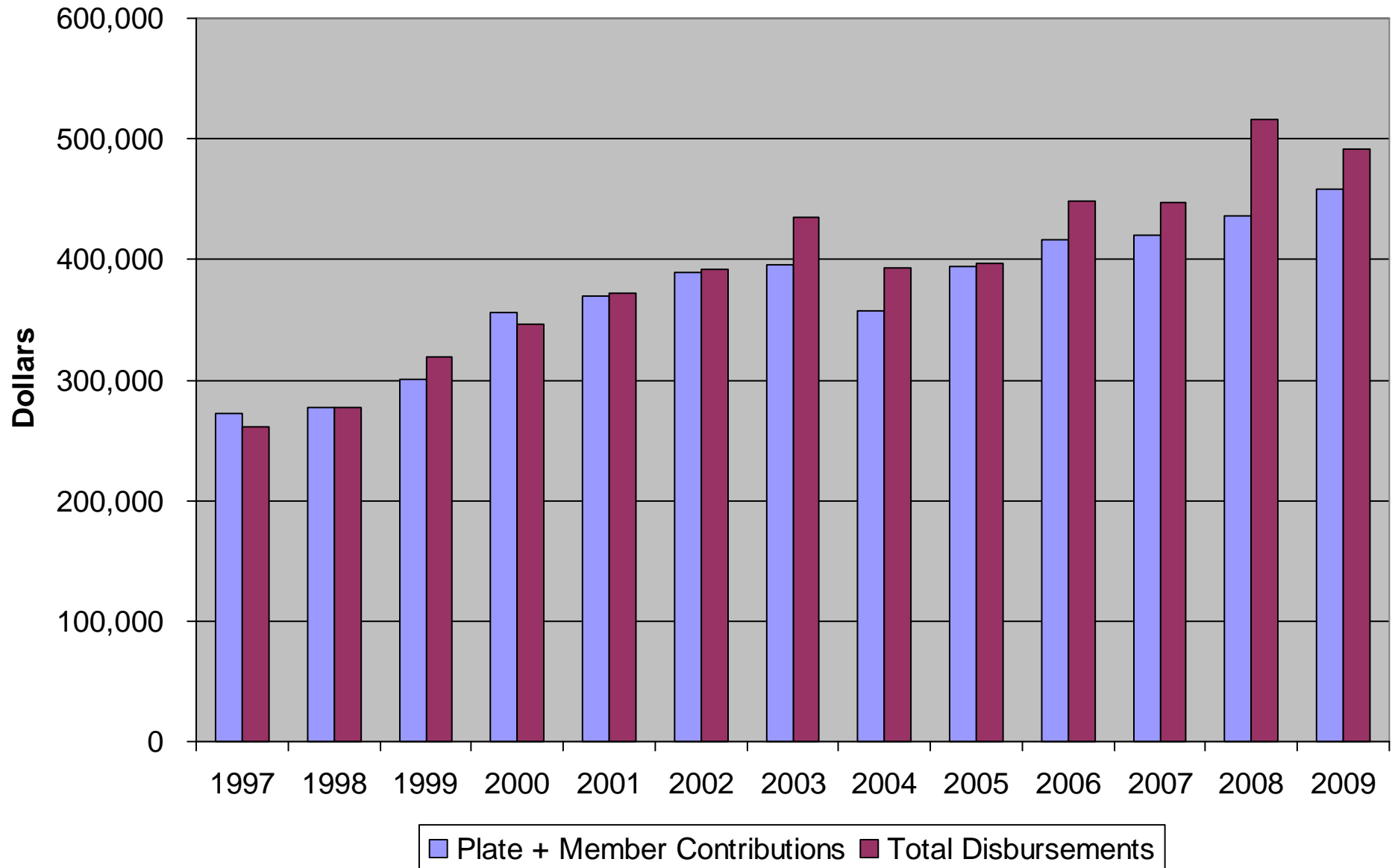
## Lay Staff Expense, 2002 to 2009

Year	2002	2003	2004	2005	2006	2007	2008	2009
Parish Secretary Salary	28,654	24,922	25,738	27,300	27,929	27,297	31,208	23,300
Pension Premium	2,146	2,211	2,216	2,430	2,496	2,356	1,103	0
Health Insurance	4,535	5,430	5,655	6,525	7,570	7,925	4,342	0
Communication Director	0	0	0	0	0	0	14,583	25,000
Office Assistance	6,656	7,371	8,158	6,445	4,880	11,588	0	0
Parish Bookkeeper	12,253	14,612	14,970	16,602	16,688	17,182	17,491	17,491
Director of Music	17,275	20,123	23,118	<b>31,110</b>	<b>31,010</b>	<b>31,716</b>	<b>32,686</b>	<b>32,686</b>
Director of Christian Education	2,271	0	0	0	0	<b>19,367</b>	<b>10,300</b>	<b>15,172</b>
Assistant Director of Christian E	0	0	0	0	0	0	<b>10,300</b>	<b>10,300</b>
Youth Program Director	10,300	<b>29,459</b>	<b>30,215</b>	<b>31,281</b>	<b>32,032</b>	<b>32,972</b>	<b>33,755</b>	<b>33,755</b>
Sexton	0	0	0	0	0	<b>4,703</b>	<b>4,058</b>	<b>4,102</b>

## Total Revenue and Total Disbursements, 1997 to 2009



## A Comparison of Plate plus Member Contributions with Total Disbursements, 1997 to 2009



## Operating History Summary: 1997 to 2009

<b>Year</b>	<b>1997</b>	<b>1998</b>	<b>1999</b>	<b>2000</b>	<b>2001</b>	<b>2002</b>	
Total Revenue	283,125	286,855	316,023	368,168	374,194	392,455	
Total Disbursements	261,251	277,821	318,516	346,650	372,267	391,212	
Surplus/(Deficit)	21,874	9,034	(2,493)	21,518	1,927	1,243	
Less Quin Foundation	0	0	0	0	0	0	
Less Gilbert & Thyra Plass Trust	0	0	0	0	0	0	
Surplus/(Deficit)	21,874	9,034	(2,493)	21,518	1,927	1,243	
<b>Year</b>	<b>2003</b>	<b>2004</b>	<b>2005</b>	<b>2006</b>	<b>2007</b>	<b>2008</b>	<b>2009</b>
Total Revenue	413,365	390,597	408,760	426,746	452,822	473,766	493,081
Total Disbursements	434,533	392,763	396,395	448,623	447,228	516,361	491,781
Surplus/(Deficit)	(21,168)	(2,166)	12,365	(21,877)	5,594	(42,595)	1,300
Less Quin Foundation	(15,000)	(15,000)	(15,000)	0	(15,000)	(15,000)	(15,000)
Less Gilbert & Thyra Plass Trust	0	0	0	0	(10,000)	(10,000)	(15,000)
Surplus/(Deficit)	(36,168)	(17,166)	(2,635)	(21,877)	(19,406)	(67,595)	(28,700)

## A Comparison of 2002 and 2009

Year	2002	2009	Difference
Revenue			
Member Contributions	379,113	450,231	71,118
Plate	10,042	7,500	(2,542)
Investment and other Income	3,300	5,350	2,050
Quin Foundation	0	15,000	15,000
Plass Charitable Trust	0	15,000	15,000
 Total Revenue	 392,455	 493,081	 100,626
Disbursements			
Total Rector Expense	110,129	91,522	(18,607)
Lay Staff Expense	96,542	183,262	86,720
Assessment	38,389	55,639	17,250
Missionary Commitment	39,744	24,000	(15,744)
Mortgage Payment	0	34,128	34,128
Facility Expense except Mortgage	33,714	48,250	14,536
Office Expense	23,426	27,320	3,894
Local Outreach	23,005	3,410	(19,595)
Christian Education	4,093	6,000	1,907
Other Mission Expense	17,194	18,250	1,056
 Total Disbursements	 391,212	 491,781	 100,569
 Surplus	 1,243	 1,300	

## Budgeting for 2010

Year	2009 Budget	Change	2010 Budget	
Member Contributions	450,231	(31,000)	419,231	+ increase
Plate	7,500		7,500	
Investment and other Income	5,350	(1,600)	3,750	
Quin Foundation	15,000	(15,000)	0	
Plass Charitable Trust	15,000		15,000	
 Total Revenue	 493,081		 445,481	 + increase
 Total Rector Expense	 91,522		 91,522	
All Other Employee Expense	183,262		183,262	
Assessment	55,639		55,639	+ increase
Missionary Commitment	24,000	23,922	47,922	+ increase
Mortgage Payment	34,128		34,128	
Facilty Expense except Mortgage	48,250		48,250	
Office Expense	27,320		27,320	
Local Outreach	3,410		3,410	
Christian Education	6,000		6,000	
Other Mission Expense	18,250		18,250	
 Total Disbursements	 491,781		 515,703	 + increase
 Surplus (Deficit)	 1,300		 (65,000 to 70,000)	